

A kitchen
designed
for you.

LOGICA 2.2 SOHO





Il cuore della casa: la cucina!

LOGICA 2.2 e SOHO:
due modelli di cucina,
interpretati in
quattro case diverse.
Tanti spunti e atmosfere
per creare un mondo
speciale: il tuo.



The heart of the home:
the kitchen!
LOGICA 2.2 and SOHO:
two kitchen models,
interpreted in four different
homes. Plenty of ideas and
atmospheres to create a
special world: yours.

El corazón del hogar: ¡la
cocina!
LOGICA 2.2 y SOHO:
dos modelos de cocina,
interpretados en cuatro
viviendas distintas.
Multitud de inspiraciones y
atmósferas para crear un
mundo especial: el tuyo.

Le cœur de la maison : la
cuisine !
LOGICA 2.2 et SOHO :
deux modèles de cuisine,
interprétés dans quatre
maisons différentes.
De nombreuses idées et
atmosphères pour créer un
monde spécial : le votre.

Das Herz in jedem Zuhause:
die Küche!
LOGICA 2.2 und SOHO: zwei
Küchenmodelle für vier
Häuser unterschiedlich
interpretiert. Viele Ideen, um
mit Atmosphäre eine ganz
besondere Welt zu kreieren:
deine.

Сердце вашего дома:
кухня!
LOGICA 2.2 и SOHO:
две модели кухни,
интерпретированные в
четырёх разных домах.
Множество идей и
атмосфера для создания
особого мира: вашего.

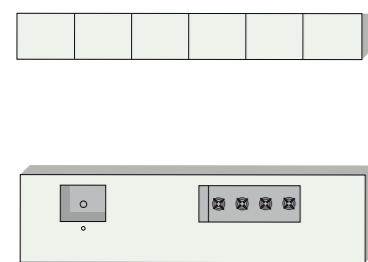
Organizzare la cucina.

Una cucina non deve essere solo bella, ma va anche organizzata ergonomicamente per rendere tutto più facile. LOGICA 2.2 e SOHO ti permettono di scegliere fra diverse soluzioni componibili, su misura per il tuo spazio ed i tuoi movimenti.

CONFORMAZIONE SU DOPPIA LINEA CON COLONNE

- _ Configuration in two rows with tall units.
- _ Configuración en doble fila con columnas.
- _ Conformation sur double ligne avec colonnes.
- _ Doppelte Küchenzeile mit Hochschränke.
- _ Компоновка в двойной линии с колоннами.

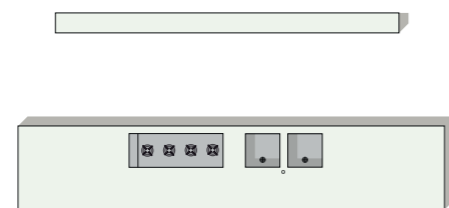
LOGICA 2.2 Matera / pag. 11



CONFORMAZIONE SU DOPPIA LINEA CON SCAFFALI

- _ Configuration in two rows with shelving
- _ Configuración en doble fila con estanterías
- _ Conformation sur double ligne avec étagères
- _ Doppelte Küchenzeile mit Regalen
- _ Вариант двойной линии с полками

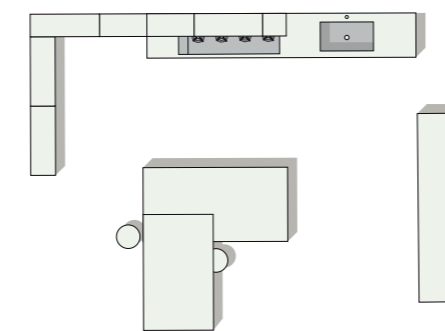
SOHO Pavia / pag. 87



CONFORMAZIONE A "U"

- _ U-shaped configuration
- _ Configuración en "U"
- _ Conformation en "U"
- _ U-förmige Küchenzeile
- _ "U"-образная компоновка

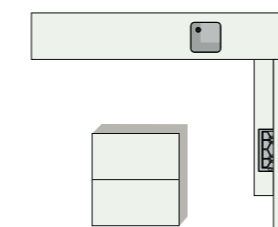
SOHO Matera / pag. 57



CONFORMAZIONE A "L" CON COLONNE CENTRALI

- _ L-shaped configuration with central tall units
- _ Configuración en "L" con columnas centrales
- _ Conformation en "L" con colonnes centrales
- _ L-förmige Küchenzeile mit Hochschränken in der Mitte
- _ "L"-образная компоновка с центральными колоннами

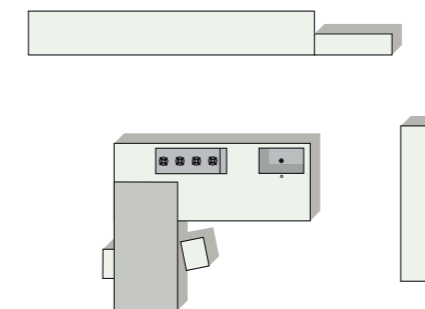
LOGICA 2.2 Milano / pag. 21



CONFORMAZIONE A "L" CON ISOLA DI LAVORO

- _ L-shaped configuration with work island
- _ Configuración en "L" con isla de trabajo
- _ Conformation en "L" avec îlot de travail
- _ L-förmige Küchenzeile mit Kochinsel
- _ "L"-образная компоновка с островом

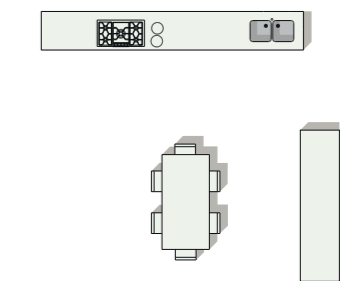
SOHO Capo Caccia / pag. 69



CONFORMAZIONE A "L" CON TAVOLO

- _ L-shaped configuration with table
- _ Configuración en "L" con mesa
- _ Conformation en "L" avec table
- _ L-förmige Küchenzeile mit Tisch
- _ "L"-образная компоновка со столом

LOGICA 2.2 Capo Caccia / pag. 31



Organising your kitchen. A kitchen shouldn't just be nice to look at. It should also be ergonomically organised to make everything easier. LOGICA 2.2 and SOHO allow you to choose between various composition solutions, tailor-made to your space and to your needs.

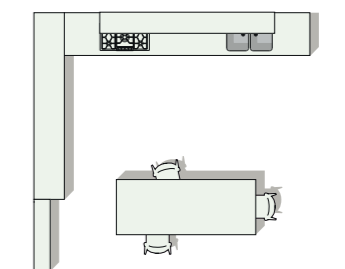
Organizar la cocina. Además de ser bonita, una cocina debe estar organizada de forma ergonómica para facilitar todas las tareas. LOGICA 2.2 y SOHO te permiten escoger entre diversas opciones modulares, a medida para tu espacio y tus movimientos.

Organiser la cuisine. Une cuisine ne doit pas être seulement belle, mais doit également être organisée ergonomiquement pour rendre tout plus facile. LOGICA 2.2 et SOHO vous permettent de choisir parmi les différentes solutions de composition, sur mesure pour votre espace et vos mouvements.

Die gut organisierte Küche. Eine Küche soll nicht nur schön sein, sondern auch gut organisiert und ergonomisch, damit alles einfacher wird. LOGICA 2.2 und SOHO bieten dir die Möglichkeit, unter verschiedenen Kombinationsmöglichkeiten zu wählen, die sich deinen Bewegungen und dem Raum anpassen.

Организация кухни. Кухня не должна быть только красивой, она должна быть организована по принципам эргономики для того, чтобы все было удобно. LOGICA 2.2 и SOHO позволяют выбрать среди множества комбинированных решений, для создания вашего персонального пространства и удобства в движениях.

SOHO Asolo / pag. 47



SOHO

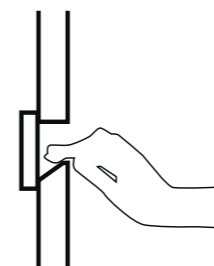
SOHO combines doors and drawers with a groove with shelving to be used as you see fit.

SOHO combina puertas y cajones con ranura y estanterías que se pueden utilizar con libertad.

SOHO associe portes et tiroirs avec gorge et étagères à utiliser librement.

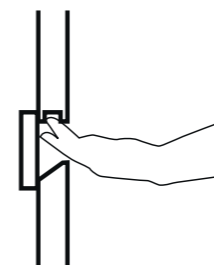
SOHO kombiniert Türen und Schubladen mit Kehlleiste mit Regalen, die nach Lust und Laune genutzt werden können.

SOHO совмещает створки и ящики с пазом и шкафы, с возможностью свободной компоновки.



gola - anta, cesto

/groove - door, large drawer /ranura - puerta, cesto /gorge - porte, grand tiroir /Kehlleiste - Tür, Auszug /паз - створка, глубокий ящик



gola - cassetto

/groove - drawer /ranura - cajón /gorge - tiroir /Kehlleiste - Schublade /паз - ящик

**SOHO
abbina
ante e
cassetti
con gola
e scaffali
da utilizzare
liberamente.**

SOHO basi

SOHO base units

Dispensa Scaffale attrezzabile

/Accessorised Larder Shelving Unit / Estantería despensa equipable / Desserte Étagère pouvant être équipée / Vorratsregal mit Zubehör / Оснащаемый шкаф

Configurazioni di ante e cassetti esterni con gola

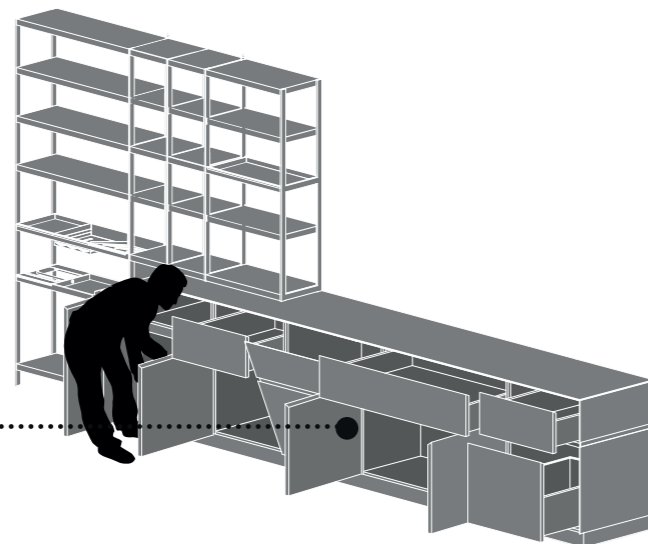
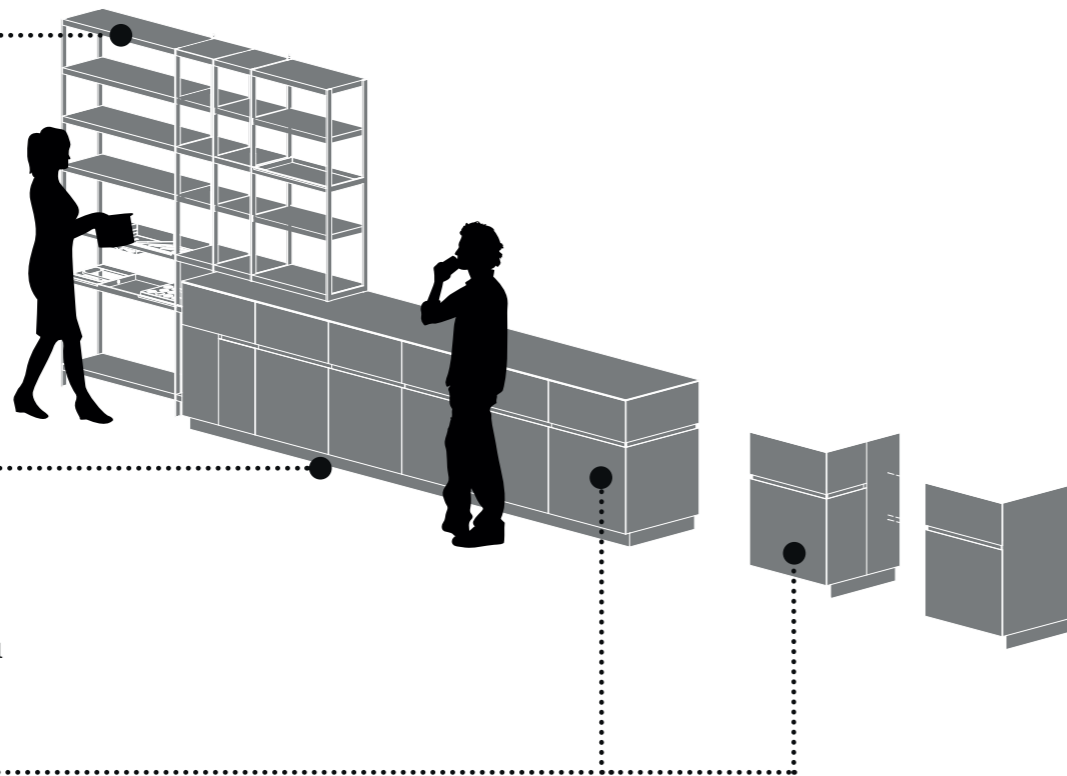
/configurations of doors and external drawers with groove / configuraciones de puertas y cajones exteriores con ranura / configurations de portes et de tiroirs extérieurs avec gorge / Ausführung der Türen und Schubladen außen mit Kehlleiste / конфигурации створок и внешних ящиков с пазом

Configurazioni di fianchi per gola laterale

/configurations of side panels for side groove / configuraciones de costados para ranura lateral / configurations de côtés pour gorge latérale / Ausführungen der Außenseiten für Kehlleiste an der Seitenteile / конфигурации боковин для бокового паза

Aperture ante e cassetti

/door and drawer opening systems / aperturas de puertas y cajones / ouvertures des portes et des tiroirs / Öffnungen Türen und Schubladen / системы открытия створок и ящиков



SOHO colonne

SOHO tall units

Dispensa Scaffale attrezzabile

/Accessorised Larder Shelving Unit / Estantería despensa equipable / Desserte Étagère pouvant être équipée / Vorratsregal mit Zubehör / Оснащаемый шкаф

Configurazioni di ante e cassetti esterni con gola

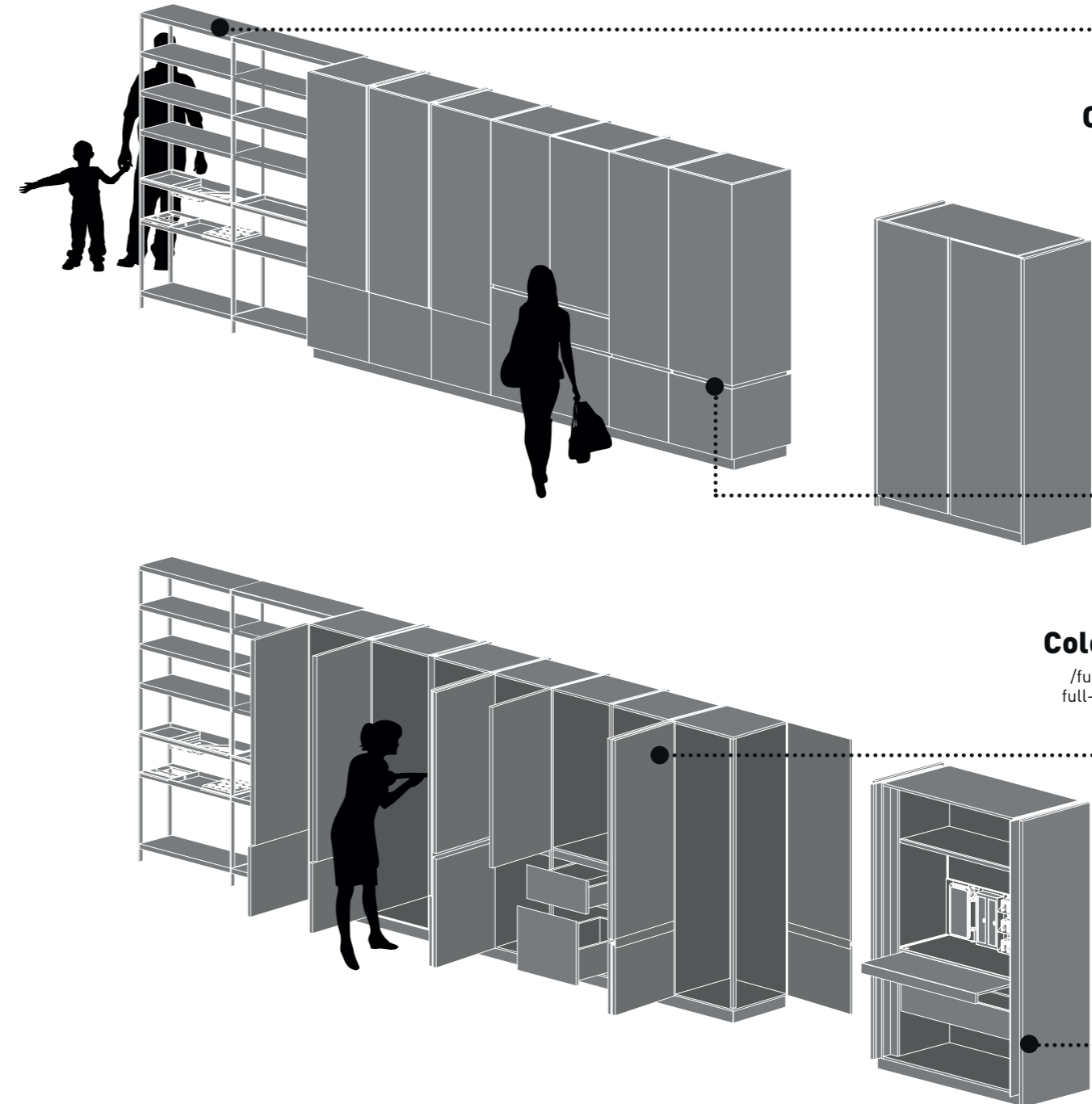
/configurations of doors and external drawers with groove / configuraciones de puertas y cajones exteriores con ranura / configurations de portes et de tiroirs extérieurs avec gorge / Ausführung der Türen und Schubladen außen mit Kehlleiste / конфигурации створок и внешних ящиков с пазом

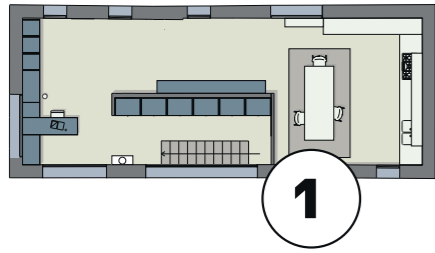
Colonne full-access

/full-access tall units / columnas full-access / colonnes full-access / Hochschränke Full-Access / колонны full-access

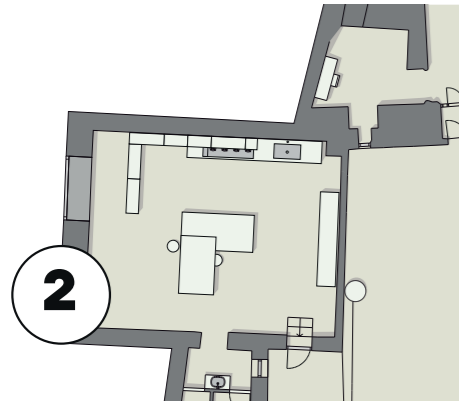
Ante rientranti

/Retractable doors / Puertas escamoteables / Portes rentrantes / Versenkbare Türen / Убирающиеся створки

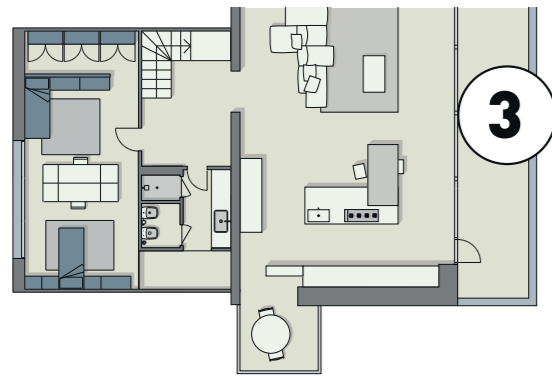




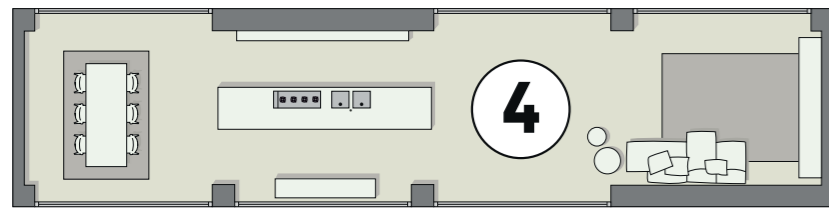
- 1 ASOLO_first floor**
- _Conformazione a "L" con tavolo
 - _L-shaped configuration with table
 - _Configuración en "L" con mesa
 - _Conformation en "L" avec table
 - _L-förmige Küchenzeile mit Tisch
 - _ "L"-образная компоновка со столом



- 2 MATERA_ground floor**
- _Conformazione a "U"
 - _U-shaped configuration
 - _Configuración en "U"
 - _Conformation en "U"
 - _U-förmige Küchenzeile
 - _ "U"-образная компоновка



- 3 CAPOCACCIA_first floor**
- _Conformazione a "L" con isola di lavoro
 - _L-shaped configuration with work island
 - _Configuración en "L" con isla de trabajo
 - _Conformation en "L" avec îlot de travail
 - _L-förmige Küchenzeile mit Kochinsel
 - _ "L"-образная компоновка с островом



- 4 PAVIA_second floor**
- _Conformazione su doppia linea con scaffali
 - _Configuration in two rows with shelving
 - _Configuración en doble fila con estanterías
 - _Conformation sur double ligne avec étagères
 - _Doppelte Küchenzeile mit Regalen
 - _Компоновка в двойной линии с шкафами

SOHO
Una cucina
solare,
armoniosa,
libera nelle
composizioni
e nei
movimenti.

SOHO
 A sunny, harmonious kitchen
 where compositions and
 movements are free.

SOHO
 Una cocina luminosa,
 armoniosa, libre en
 cuanto a composiciones y
 movimientos.

SOHO
 Une cuisine solaire,
 harmonieuse, libre dans les
 compositions et dans les
 mouvements.

SOHO
 Eine heitere und
 harmonische Küche, die
 Freiheit bei Planung und
 Bewegung bietet.

SOHO
 Солнечная, гармоничная,
 свободная в композициях и
 движениях кухня.

**Il piano
di lavoro
ideale:
una pietra
resistente
e piacevole
al tocco.**

The ideal worktop: a hard-wearing stone that is a pleasure to touch.

La encimera ideal: una piedra resistente y agradable al tacto.

Le plan de travail idéal : une pierre résistante et agréable au toucher.

Die ideale Arbeitsplatte: resistenter Stein, angenehm zu berühren.

Идеальная рабочая поверхность: прочный и приятный на ощупь камень.







Basi laccato opaco tè verde
Gola laccato opaco ghisa
Zoccolo laccato opaco ghisa
Top marmo grigio soft
Colonne laccato opaco tè verde
Pensili laccato opaco tè verde
Scocche antracite
Dispensa Scaffale struttura verniciato
 ghisa, ripiani laccato opaco tè verde

Base units matt tè verde lacquered
Groove matt ghisa lacquered
Plinth matt ghisa lacquered
Top grigio soft marble
Tall units matt tè verde lacquered
Wall units matt tè verde lacquered
Units antracite
Larder Shelving Unit ghisa painted
 structure, matt tè verde lacquered shelves

ASOLO_first floor







**Legno
spazzolato:
le venature
diventano
naturali
protagoniste.**



Brushed wood:
the grain becomes the
genuine star.

Madera cepillada:
las vetas se erigen como
protagonistas naturales.

Bois brossé :
les veinures deviennent des
protagonistes naturels!

Poliertes Holz:
Die Maserung werden zu
natürlichen Protagonisten.

Рифленое дерево:
текстура выступает
в качестве основного
натурального элемента.



**Un
laboratorio
di sapori e
convivialità,
da vivere
tutti
insieme.**

A workshop of flavours and conviviality, to enjoy all together.

Un laboratorio de sabores y vida en compañía, para disfrutar todos juntos.

Un laboratoire de saveurs et convivialité, à vivre tous ensemble.

Eine Werkstatt des Geschmacks und des fröhlichen Zusammenseins – ein gemeinsames Erlebnis.

Лаборатория вкусов и совместного проведения времени.





Basi fashion wood biscotto
Gola laccato opaco ghisa
Zoccolo laccato opaco ghisa
Top quarzo beach dark grey
Piano tavolo fashion wood biscotto
Colonne fashion wood biscotto
Pensili fashion wood biscotto
Scocche antracite
Dispensa Scaffale struttura verniciato
 ghisa, ripiani fashion wood biscotto

Base units biscotto fashion wood
Groove matt ghisa lacquered
Plinth matt ghisa lacquered
Top beach dark grey quartz
Table top biscotto fashion wood
Tall units biscotto fashion wood
Wall units biscotto fashion wood
Units antracite
Larder Shelving Unit ghisa painted
 structure, biscotto fashion wood shelves

MATERA_ground floor



**Ante con
apertura
full-access
per
un'ottimale
accessibilità.**



Doors with full-access opening to ultimate accessibility.

Puertas con apertura full-access para una máxima accesibilidad.

Portes avec ouverture full-access pour une accessibilité optimale.

Türen mit Full-Access-Öffnung, die für freien Zugang sorgen.

Створки для системы открытия full-access для оптимального доступа.





**Un
trattamento
naturale
dona
al legno
inedite doti
visive.**





A natural treatment lends the wood unprecedented visual appeal.

Un tratamiento natural confiere a la madera cualidades visuales sin precedentes.

Un traitement naturel donne au bois des qualités visuelles inédites.

Eine natürliche Behandlung verleiht dem Holz ein ganz besonderes Aussehen.

Натуральная обработка придает дереву изумительные визуальные характеристики.





Basi laccato bianco opaco
Gola laccato bianco opaco
Zoccolo basi laccato bianco opaco
Zoccolo colonne laccato opaco ghisa
Top corian bianco
Piano tavolo rovere termocotto
Colonne rovere termocotto
Scocche antracite
Dispensa Scaffale struttura verniciato bianco, ripiani laccato opaco bianco

Base units matt bianco lacquered
Groove matt bianco lacquered
Plinth matt bianco lacquered on base units
Plinth matt ghisa lacquered on tall units
Top bianco Corian
Table top baked oak
Tall units baked oak
Units antracite
Larder Shelving Unit bianco painted structure, matt bianco lacquered shelves

CAPO CACCIA_first floor



Ante
rientranti
e piani
estraibili,
per rendere
facile
ogni
movimento.



Retractable doors and pull-out surfaces, to make your every movement easy.

Puertas escamoteables y baldas extraíbles, para facilitar todos los movimientos.

Portes rentrantes et plans extractibles, pour faciliter chaque mouvement.

Versenkbare Türen und ausziehbare Platten sorgen für Bewegungsfreiheit.

Убирающиеся створки и выдвигаемые поверхности для удобства движений.



**Il fascino di
antiche assi
di legno,
in un contesto
contemporaneo.**

The charm of old wooden planks, in a contemporary setting.

El encanto de antiguas tablas de madera en un contexto moderno.

Le charme de vieilles planches en bois, dans un contexte contemporain.

Die Faszination alter Holzbalken in einem modernen Kontext.

Очарование античных деревянных досок в современном контексте.







Basi laccato bianco opaco
Gola laccato bianco opaco
Zoccolo colonne laccato opaco ghisa
Top corian bianco
Piano tavolo olmo antico
Colonne rovere termocotto
Scocche antracite
Dispensa Scaffale struttura verniciato bianco, ripiani laccato opaco bianco

Base units matt bianco lacquered
Groove matt bianco lacquered
Plinth matt bianco lacquered on base units
Tall unit plinth matt ghisa lacquered
Top bianco Corian
Table top aged-look elm
Tall units baked oak
Units antracite
Larder Shelving Unit bianco painted structure, matt bianco lacquered shelves

CAPO CACCIA_first floor

Nell'antica cascina, un piano di lavoro realizzato con resina cementizia.





In this old farmhouse, a worktop made with cement resin.

En la vieja granja, una encimera realizada con resina de cemento.

Dans la vieille ferme, un plan de travail réalisé en résine ciment.

Ein altes Bauernhaus und darin eine Arbeitsplatte aus Zementharz.

В античном доме рабочая поверхность из цементного композита.











Basi resina cementizia diorite
Gola resina cementizia diorite
Zoccolo resina cementizia diorite
Top resina cementizia diorite
Scocche antracite
Dispensa Scaffale struttura verniciato bianco, ripiani laccato opaco bianco

Base units Diorite cement resin
Groove Diorite cement resin
Plinth Diorite cement resin
Top Diorite cement resin
Units antracite
Larder Shelving Unit bianco painted structure, matt bianco lacquered shelves

PAVIA _second floor



Attrezzature interne basi

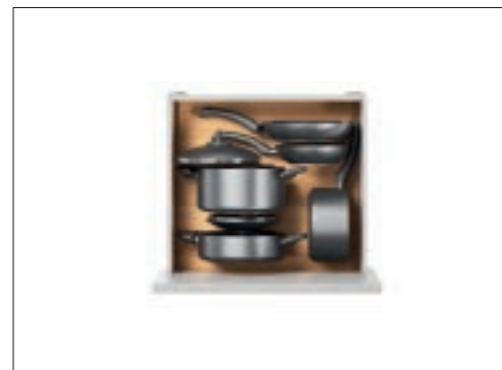
Esempio di attrezzature interne illustrate nel catalogo. / Base unit internal equipment. Example of internal equipment illustrated herein.



pag. 16
Porta bottiglie per cesto /Bottle rack for large drawer

pag. 19
Porta posate per cassetto /Cutlery tray for drawer

pag. 27
Raccolta differenziata per cesto /Differentiated waste disposal for large drawer



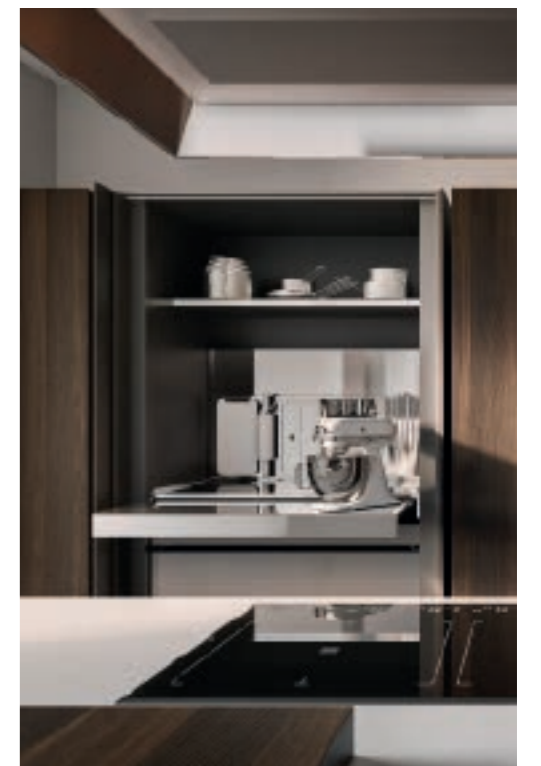
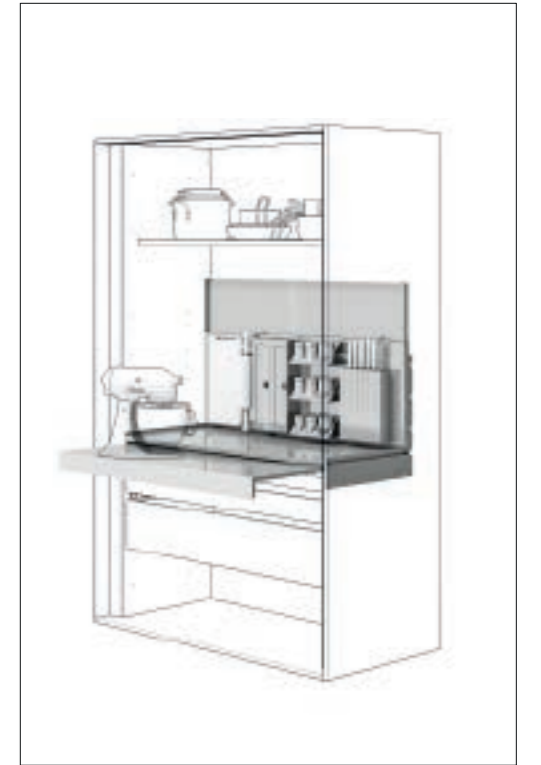
pag. 38
Porta piatti per cesto /Dish rack for large drawer

pag. 38
Porta rifiuti per anta /Waste bin for door

pag. 52
Porta pentole per cesto /Pan rack for large drawer

Attrezzature interne colonne

Esempio di attrezzature interne illustrate nel catalogo. /Tall unit internal equipment. Example of internal equipment illustrated herein.



pag. 37
Colonna con meccanismo estrazione totale /Tall unit with full extraction mechanism

pag. 65
Colonna full-access /Full-access tall unit

pag. 76
Colonna con ante rientranti, schienale attrezzato e ripiano estraibile acciaio inox /Tall unit with retractable doors, accessorised back panel and stainless steel pull-out shelf

art direction
Brunella Vaccher
Genny Canton

set coordinator/graphic
Genny Canton Studio

digital image
Nudesign

photo
Cristiano Cecconi

separations
Luce srl

print
www.sincromia.it

stampato 10/2015



VALDESIGN srl
Via A. Luciani 70
31043 Vallongo di Fontanelle
Treviso, Italy
Tel. +39 0434 769811
Fax +39 0434 769845
www.valdesigncucine.it
info@valdesigncucine.it

Verifica le finiture disponibili sul nostro sito internet. / Check the finishes available on our website. / Consulte los acabados disponibles en nuestro sitio web. / Vérifiez les finitions disponibles sur notre site internet. / Überprüfen Sie auf unserer Webseite, ob die gewünschte Ausführung erhältlich ist. / Познакомьтесь с вариантами отделки на нашем интернет-сайте **www.valdesigncucine.it**

ALF UNO s.p.a. si riserva di apportare in qualsiasi momento modifiche a prodotti, misure e materiali, che ritenesse utili per esigenze di carattere produttivo e commerciale. Per essere sempre aggiornati vi invitiamo a consultare il nostro sito internet **www.valdesigncucine.it**

LE FINITURE

I materiali utilizzati dalla nostra azienda sono selezionati tra i più affidabili per applicazione e resa estetica. Nonostante questo devono considerarsi tollerabili alcune differenze dovute alle caratteristiche stesse di materiali come essenze naturali, vetri, laccature e all'artigianalità di alcune fasi del processo produttivo che da sempre è un nostro valore aggiunto. Inoltre alcune finiture possono subire nel tempo maturazioni dovute all'azione della luce e del tempo. È importante quindi specificare se nell'ordine vi sono sostituzioni o completamenti per valutare insieme il miglior modo di procedere. Le tonalità di colore e le finiture illustrate vanno considerate puramente indicative. Verificare sempre la fattibilità dell'abbinamento finiture consultando l'interno del listino.

ALF UNO s.p.a. reserves the right to make any changes to products, measurements and materials at any time deemed useful for manufacturing and sales purposes. To stay up to date at all times, please visit our website **www.valdesigncucine.it**

FINISHES

The materials we use are selected among the most reliable products in terms of application and aesthetic rendering. Despite this, certain differences due to the very characteristics of materials such as natural wood finishes, glass and lacquers must be considered tolerable, as well as the hand-crafted nature of certain phases of the production process, which has always been one of our added values. In addition, some finishes may change over time, due to the effects of light and time. It is therefore important to specify whether there are replacements or completions in the order to assess the best way to proceed together. The finishes featured in this sample collection are purely indicative and are not available for all products. Please check in the price list if the finish is available for the chosen item. Orders will not be accepted for products with finishes not included in the price list. The colour shades and finishes illustrated herein are to be considered purely indicative. Always check the feasibility of finish combinations by consulting the price list contents.

