



This is a line of modular chests of drawers whose elements can be used individually or combined to form a large container unit. A new version with a refined open

compartment and an aluminium structure supporting the drawers and increasing its possibilities for use.

## ■ Finishes

### Structure finishes

matt lacquer colours  
in the Molteni colour range  
  
open grain lacquer colours  
in the Molteni colour range

### Drawer finishes

matt lacquer colours  
in the Molteni colour range  
  
open grain lacquer colours  
in the Molteni colour range  
  
glossy lacquer colours  
in the Molteni colour range

### handle and

**insert of the pressure-opening doors**  
shiny chrome finish

### legs

black or shiny chrome.

### Top finishes

matt lacquer colours  
in the Molteni colour range  
  
open grain lacquer colours  
in the Molteni colour range  
  
glossy lacquer colours  
in the Molteni colour range

black oak  
dark oak  
grey oak  
light elm  
dark elm

coloured glass  
in the Molteni colour range

etched coloured glass  
in the Molteni colour range

## ■ Technical information

Structure and front	Wood particleboard with melamine facing painted in the colours available in the "Molteni Range".
Sides and internal drawer bottom	Particleboard panel, coated with melamine resin.
Handle	In chrome plated metal.
Open compartment	Frame in extruded anodised aluminium with tempered coloured etched glass (th. 4mm). Adjustable metallic feet.
Glass top	Glass (th. 10mm), tempered coloured extralight or etched and coloured in the colours available in the "Molteni Range".
Wooden top	MDF panel veneered with wood – Oak (Quercus) or Elm (Ulmus rubra) – or faced with melamine painted in the "Molteni Range" colours.
Adjustable feet	Non-skid plastic material.

## Types

### drawer unit with 1 drawer

W 480 D 480 H 342  
W 18 7/8" D 18 7/8" H 13 1/2"



handle  
**NCM4/16**

pressure-opening  
**NCP4/16**

### drawer unit with 1 drawer

W 960 D 480 H 342  
W 37 3/4" D 18 7/8" H 13 1/2"



handle  
**NCM9/16**

pressure-opening  
**NCP9/16**

### drawer unit with 2 drawers

W 480 D 480 H 340  
W 18 7/8" D 18 7/8" H 13 3/8"



handle  
**NTM4/32**

pressure-opening  
**NTP4/32**

### drawer unit with 2 drawers

W 480 D 480 H 502  
W 18 7/8" D 18 7/8" H 19 3/4"

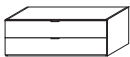


handle  
**NCM4/32**

pressure-opening  
**NCP4/32**

### drawer unit with 2 drawers

W 960 D 480 H 340  
W 37 3/4" D 18 7/8" H 13 3/8"



handle  
**NTM9/32**

pressure-opening  
**NTP9/32**

### drawer unit with 2 drawers

W 960 D 480 H 502  
W 37 3/4" D 18 7/8" H 19 3/4"



handle  
**NCM9/32**

pressure-opening  
**NCP9/32**

### drawer unit with 3 drawers

W 480 D 480 H 500  
W 18 7/8" D 18 7/8" H 19 3/4"



handle  
**NTM4/48**

pressure-opening  
**NTP4/48**

### drawer unit with 3 drawers

W 480 D 480 H 662  
W 18 7/8" D 18 7/8" H 26"



handle  
**NCM4/48**

pressure-opening  
**NCP4/48**

### drawer unit with 3 drawers

W 960 D 480 H 500  
W 37 3/4" D 18 7/8" H 19 3/4"

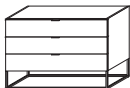


handle  
**NTM9/48**

pressure-opening  
**NTP9/48**

### drawer unit with 3 drawers

W 960 D 480 H 662  
W 37 3/4" D 18 7/8" H 26"

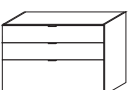


handle  
**NCM9/48**

pressure-opening  
**NCP9/48**

### drawer unit with 3 drawers

W 960 D 480 H 660  
W 37 3/4" D 18 7/8" H 26"

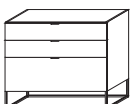


handle  
**NTM9/64/3**

pressure-opening  
**NTP9/64/3**

### drawer unit with 3 drawers

W 960 D 480 H 822  
W 37 3/4" D 18 7/8" H 32 3/8"



handle  
**NCM9/64/3**

pressure-opening  
**NCP9/64/3**

## Types

### drawer unit with 4 drawers

W 960 D 480 H 660

W 37 3/4" D 18 7/8" H 26"



handle

**NTM9/64/4**

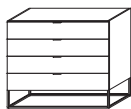
pressure-opening

**NTP9/64/4**

### drawer unit with 4 drawers

W 960 D 480 H 822

W 37 3/4" D 18 7/8" H 32 3/8"



handle

**NCM9/64/4**

pressure-opening

**NCP9/64/4**

### drawer unit with 5 drawers

W 480 D 480 H 980

W 18 7/8" D 18 7/8" H 38 5/8"



handle

**NTM4/96**

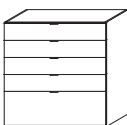
pressure-opening

**NTP4/96**

### drawer unit with 5 drawers

W 960 D 480 H 980

W 37 3/4" D 18 7/8" H 38 5/8"



handle

**NTM9/96**

pressure-opening

**NTP9/96**

### led lighting system

for open compartment

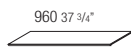
### finishing tops

D 484 th 10

D 19" th 3/8"



**TOQ48**



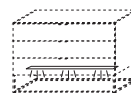
**TOQ96**

for W 480 18 7/8"



**HLG48**

for W 960 37 3/4"



**HLG96**