

**val**design  
I T A L I A

# FORTY/5 REEF

**FORTY/5 - REEF** *:kitchens for living\_*

# FORTY/5 REEF

:INDEX

- 02. *Forty/5 Cemento*
- 10. *Forty/5 Laccato*
- 20. *Reef vetro*
- 30. *Reef vetro*
- 38. *Plus prodotto / Plus product*
- 39. *Ante / Doors*
- 40. *Finiture / Finishes*



ANTE / DOORS

# FORTY/5 CEMENTO

*:aspetto e  
sensazioni tattili  
inedite*

Beguiling appeal and unprecedented tactile sensations

*cemento diorite / olmo chiaro*

Cucina Forty/5 in Cemento Diorite e Olmo chiaro, top Cemento Diorite, piano snack Olmo chiaro. Pensili Bianco opaco. Colonne Olmo chiaro.

Forty/5 kitchen in Diorite Cement and Chiaro Elm, Diorite Cement top, Chiaro Elm snack bar. Matt Bianco wall units. Chiaro Elm tall units.

Cocina Forty/5 en Cemento Diorite y Olmo chiaro, encimera Cemento Diorite, barra de desayunos Olmo chiaro. Colgantes Bianco mate. Columnas Olmo chiaro.

Cuisine Forty/5 en Ciment Diorite et Orme chiaro, plan de travail en Ciment Diorite, plan snack en Orme chiaro. Éléments hauts Bianco mat. Armoires Orme chiaro.

Küche Forty/5 in Zement Diorite und Ulme Chiaro, Abdeckplatte Zement Diorite, Platte Snacktisch Ulme Chiaro. Hängeelemente Bianco matt. Hochschränke Ulme Chiaro.

Кухня Forty/5 из Цемента Diorite и Вяза Chiaro, столешница Цемент Diorite, закусочный столик Вяз chiaro. Навесные элементы Bianco матовый. Колонны из Вяза Chiaro.



eat





*Ruvido al tatto, deciso ed essenziale nelle forme, un nuovo materiale trova collocazione in cucina.*

Rough to touch, bold and essential in its shapes, a new material finds a new placement in the kitchen.

Áspero al tacto, de formas decididas y esenciales, un nuevo material encuentra su sitio en la cocina.

Rugueux au toucher, décidé et essentiel dans les formes, un nouveau matériau trouve sa place dans la cuisine.

Rau, geradlinig und streng in seiner Form: Ein neues Material bereichert Ihre Küche.

Новый материал, шероховатый на ощупь, решительный и минималистский в формах, находит свое применение на кухне.





ANTE / DOORS

# FORTY/5 LACCATO

*:quarantacinque gradi,  
nuove inclinazioni*

Forty-five degrees, new inclinations

*olmo caffè / bianco opaco*

Cucina Forty/5 in Bianco opaco e Olmo Caffè, top Corian Glacer white e Cemento Diorite. Pensili Bianco opaco. Colonne Olmo caffè.

Forty/5 kitchen in matt Bianco and Caffè Elm, Glacer white Corian and Diorite Cement top. Matt Bianco wall units. Caffè Elm tall units.

Cocina Forty/5 en Bianco mate y Olmo Caffè, encimera Corian Glacer white y Cemento Diorite. Colgantes Bianco mate. Columnas Olmo caffè.

Cuisine Forty/5 en Bianco mat et Orme Caffè, plan de travail en Corian Glacer white et Ciment Diorite. Éléments hauts Bianco mat. Armoires Orme caffè.

Küche Forty/5 in Bianco matt und Ulme Caffè, Abdeckplatte Corian Glacer White und Zement Diorite. Hängeelemente Bianco matt. Hochschränke Ulme Caffè.

Кухня Forty/5 из Bianco матовый и Вяза Caffè, столешница Кориан Glacer white и Цемент Diorite. Навесные элементы Bianco матовый. Колонны Вяз caffè.



## FORTY/5

*:linee forti e scelte precise.*

Strong silhouettes and accurate choices

Linee forti sono il frutto di scelte precise; la nuova conformazione dell'anta definisce i volumi della cucina.

Strong silhouettes are the result of accurate choices; the new door configuration defines the volumes of the kitchen.  
Las marcadas líneas son fruto de decisiones precisas; la nueva conformación de la puerta define los volúmenes de la cocina.

Les lignes fortes sont le fruit de choix précis ; la nouvelle conformation de la porte définit les volumes de la cuisine.

Die starke Linienführung ist das Ergebnis von klarer Design-Entscheidungen: Die neue Form der Tür definiert das Volumenspiel der Küche.

Решительные линии являются плодом продуманного выбора; новая структура створки определяет объемы кухни.





*Semplice e funzionale: La combinazione di profilo gola e taglio inclinato dell'anta rende la presa perfetta.*

Simple and functional: The combination of groove profile and the tilted cut of the door makes for the perfect grip.

Sencilla y funcional: la combinación de uñero y corte inclinado de la puerta garantiza un perfecto agarre.

Simple et fonctionnelle : La combinaison du profil gorge et de la découpe inclinée de la porte rend la prise parfaite.

Einfach und funktional: Die Kombination aus Kehlprofil und schrägem Schnitt der Tür sorgt für perfekte Griffigkeit.

Простая и функциональная: Сочетание профиля-паза и наклонного среза створки делает захват максимально удобным.

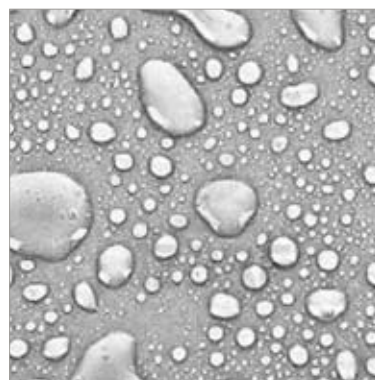






**PLUS PRODOTTO**

PRODUCT STRENGTHS - PLUS DE PRODUCTO - PLUS PRODUIT - PLUS PRODUKT - ПРЕИМУЩЕСТВА ПРОДУКЦИИ

**SCOCHE IDROREPELLENTI**

Water-repellent bodies  
Estructuras hidrorrepelentes  
Caissons hydrofuges  
Wasserabweisende Korpusse  
Водоотталкивающие каркасы

**KIT PER MANUTENZIONE E PULIZIA ANTE FINITURA CEMENTO**

Cleaning and care kit for cement finish doors

Kit para mantenimiento y limpieza de puertas con acabado cemento  
Kit pour entretien et nettoyage des portes finition ciment  
Kit für Pflege und Reinigung für Türen in der Ausführung Zement  
Комплект для ухода и очистки створок в отделке цемент

**CERNIERE-MECCANISMI-GUIDA CASSETTO ASSISTITI**

Assisted drawer runner-mechanisms-hinges  
Bisagras-mecanismos-guías de cajón asistidos  
Charnières-mécanismes-glissière du tiroir assistés  
Gedämpfte Scharniere-Mechanismen-Schubladenschienen  
Шарниры-механизмы-направляющие ящика с доводчиками

**REGOLAZIONE PIEDINO H6 ACCESSIBILE DALL'INTERNO DEL VANO BASE**

H6 foot adjustment which can be accessed from inside the base unit module  
Regulación de pata h6 accesible desde dentro del hueco del mueble bajo  
Réglage du pied h.6 accessible de l'intérieur de la niche de l'élément bas  
Der Einstellmechanismus des Fußes H6 ist zugänglich über das Innere des Unterteils  
Регулировка ножки h6 изнутри отсека тумбы

**GOLA ORIZZONTALE**

Horizontal groove  
Uñero horizontal  
Gorge horizontale  
Horizontale Kehlleiste  
Горизонтальный паз

**BASE CON VUOTO SANITARIO MAGGIORE, BEN 55 MM**

Base unit with larger sanitary space, a generous 55 mm  
Mueble bajo con hueco para conductos más grande, de 55 mm  
Élément bas avec vide sanitaire supérieur, 55 mm  
Unterschrank mit großem Installationsfach, 55 mm  
Тумба с проемом более 55 мм

**SPESSORE ANTA DI 25MM CHE PERMETTE UNA SICURA APERTURA**

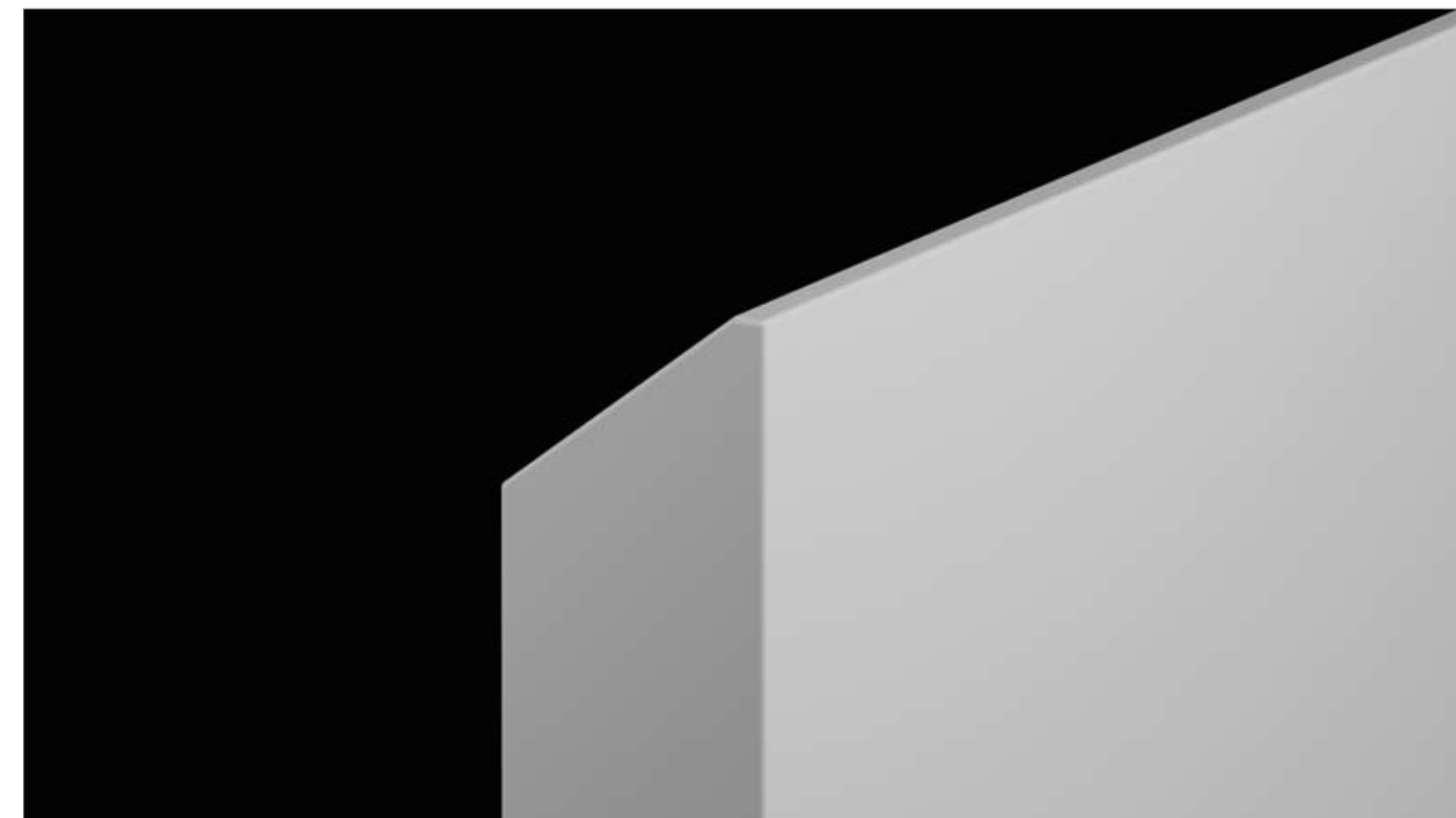
25mm thick door ensuring safe opening  
Espesor de 25 mm de la puerta que permite una apertura segura  
Épaisseur de la porte de 25mm qui permet une ouverte sûre  
Die Stärke der Türplatte von 25mm sorgt für ein sicheres Öffnen der Tür  
Толщина створки 25мм, обеспечивающая надежное открытие

**RICCA MODULARITÀ**

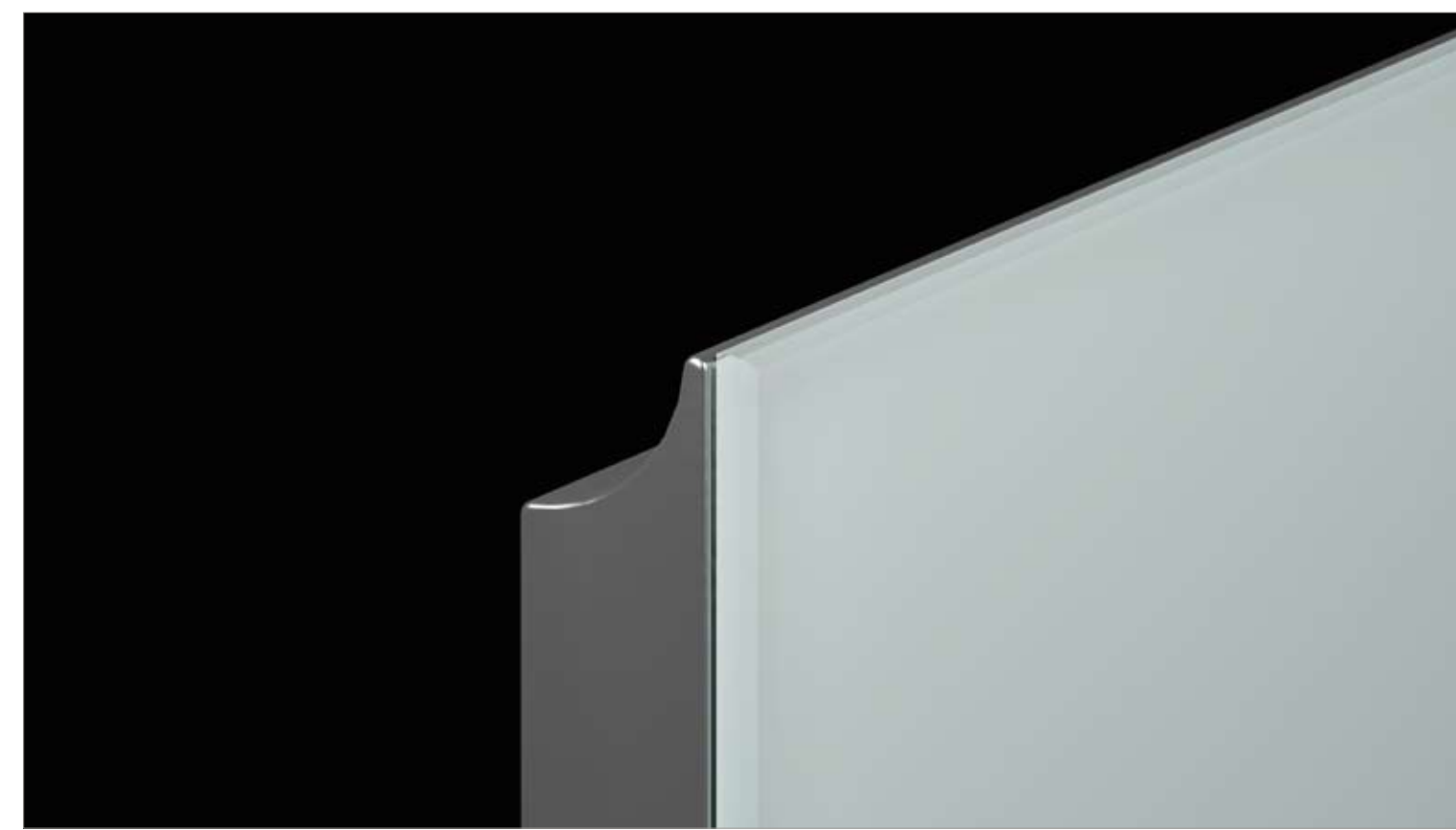
Extensive modularity  
Amplia modularidad  
Riche modularité  
Umfangreiche Modulauswahl  
Богатая модульность

**ANTE**

DOORS - PUERTAS - FAÇADES - TÜREN - СТВОРКИ



FORTY/5



REEF

**VETRI LUCIDI O SATINATI**

HIGH GLOSS OR SATIN FINISH GLAZING - CRISTALES BRILLANTES O SATINADOS - VERRES BRILLANTS OU SATINÉS - GLÄNZENDES ODER SATINIERTES GLAS - ГЛЯНЦЕВЫЕ ИЛИ САТИНИРОВАННЫЕ СТЕКЛА

**Con telaio Bianco** - With Bianco frame - Con perfil Bianco - Avec cadre Bianco - Mit Rahmen Bianco - С каркасом Bianco



TELAIO BIANCO



BIANCO 801

MAGNOLIA 802

SAHARA 803

CENERE 807

GRIGIO PERLA 901

**Con telaio Brunito** - With Brunito frame - Con perfil Brunito - Avec cadre Brunito - Mit Brunito Rahmen - С каркасом Brunito



TELAIO BRUNITO



JUTA 808

ARGILLA 806

GRIGIO FUMO 902

NERO 903

**CEMENTO**

CEMENT - CEMENTO - CIMENT - ZEMENT - ЦЕМЕНТ



TALCO C01

CANAPA C02

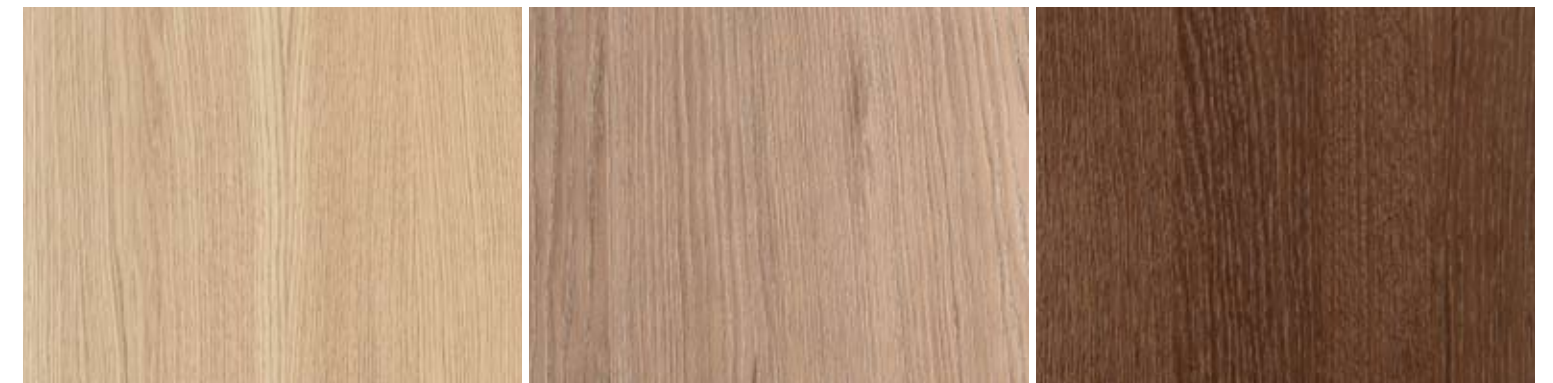
JUTA C03



CENERE C04

DIORITE C05

BASALTO C06

**FASHION WOOD**

NATURALE 014

CANAPA 019

TABACCO 013



TERRA 017

GRIGIO 016

CARBONE 018

**OLMO**

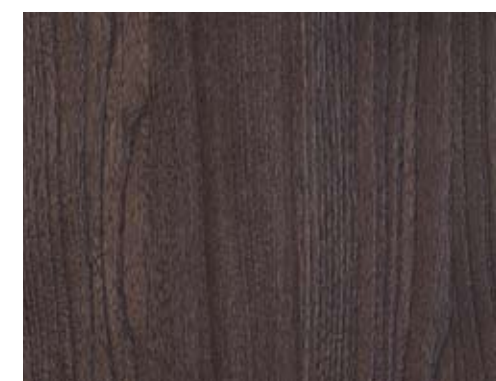
ELM - OLMO - ORME - ULME - БЯЗ



CHIARO 020

MIELE 021

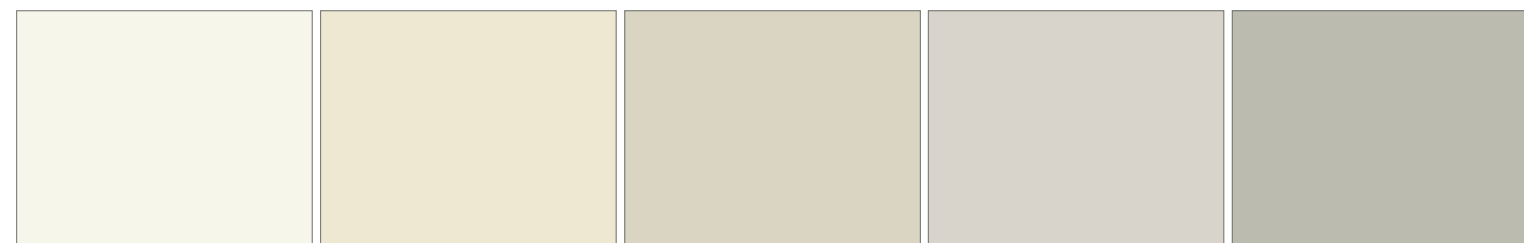
BISCOTTO 022



CAFFÈ 023

**COLORI LACCATI OPACHI/OPACHI GOFRATI O LUCIDI**

MATT/EMBOSSED AND HIGH GLOSS LACQUERED COLOURS - COLORES LACADOS MATES/MATES GOFRADOS Y BRILLANTES - LAQUÉS MATS/MATS GAUFRÉS ET BRILLANTS - FARBEN MATT LACKIERT/MATT GAUFRIERT UND GLÄNZEND - МАТОВЫЕ/МАТОВЫЕ ГОФРИРОВАННЫЕ И ГЛЯНЦЕВЫЕ ЦВЕТА



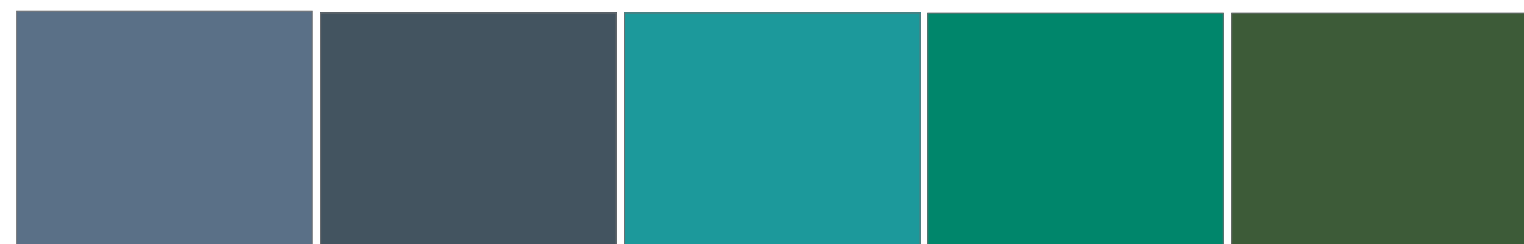
BIANCO 1      MAGNOLIA 2      AVORIO 9      SAHARA 3      CENERE 7



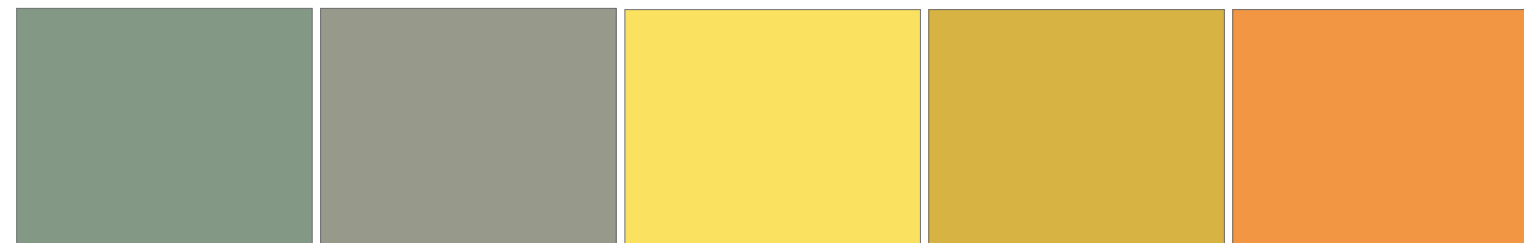
PLATINO 10      PIOMBO 11      JUTA 8      CRETA 4      ARGILLA 6



GRIGIO PERLA 101      GRIGIO FERRO 104      GRIGIO FUMO 102      NERO 103      FIORDALISO 84



AVIO 85      OCEANO 87      MALDIVE 86      SMERALDO 66      VERDE SCURO 62



BAMBÙ 64      TÈ VERDE 65      GIALLLO CEDRO 45      SENAPE 46      ZAFFERANO 41



ARAGOSTA 43      ROSSO 22      PAPAVERO 27

**ROVERI COLORI OPACHI PORO APERTO SPAZZOLATI**

BRUSHED OAKS LACQUERED IN MATT COLOURS - ROBLES CEPILLADOS LACADOS COLORES MATE - CHÊNES BROSSÉS LAQUÉS MATS POLIERTE EICHENHÖLZER, IN MATTEN FARBEN LACKIERT - ДУБ РИФЛЕННЫЙ КРАШЕНЫЙ МАТОВЫХ ЦВЕТОВ



BIANCO 401      MAGNOLIA 402      AVORIO 409      SAHARA 403      CENERE 407



PLATINO 410      PIOMBO 411      JUTA 408      CRETA 404      ARGILLA 406



TÈ VERDE 465      BAMBÙ 464      GRIGIO PERLA 501      GRIGIO FERRO 504      GRIGIO FUMO 502



NERO 503

## **FORTY/5 - REEF**

design **C.R.S. Valdesign** concept and set coordinator **C.R.S. Valdesign** print **Grafiche Antiga**

stampato Aprile 2013

Valdesign srl si riserva di apportare in qualsiasi momento quelle modifiche a prodotti, misure e materiali, che ritenesse utili per esigenze di carattere produttivo e commerciale. Le tonalità di colore e le finiture illustrate vanno considerate puramente indicative. Per ogni aspetto tecnico e dimensionale fare riferimento ai listini aziendali e relativi aggiornamenti. Valdesign srl reserves the right to make any changes to products, measurements and materials at any time deemed useful for manufacturing and sales purposes. The colour shades and finishes illustrated herein are to be considered purely indicative. For all technical and dimensional issues, please refer to the company price lists and related updates.

**Nessuna immagine, testo o composizione grafica di questo catalogo può essere riprodotta o usata in qualsiasi forma.**  
No picture, text or graphic composition in this catalogue may be reproduced or used in any way.

**val**design®  
I T A L I A

VALDESIGN srl  
Via A. Luciani 70  
31043 Vallongo di Fontanelle  
Treviso Italy  
Tel +39 0434 769811  
Fax +39 0434 769845  
[www.valdesigncucine.eu](http://www.valdesigncucine.eu)  
[info@valdesigncucine.eu](mailto:info@valdesigncucine.eu)

